



CS 1500



Safety & Regulatory Guide

Notice

©Carestream Health, Inc., 2017. The information in this document is subject to change. Neither Carestream Health nor any of its subsidiaries shall be liable for errors contained herein or for incidental damages in conjunction with the furnishing, performance, or use of this material. No part of this publication may be reproduced without the permission of Carestream Health, Inc.

Carestream Health is a trademark of Carestream Health, Inc.

All other trademarks and registered trademarks are the property of their respective holders.

The CS 1500 is intended for professional use only.

US Federal law restricts this device to sale by or on the order of a dentist.

The CS 1500 intraoral camera is also marketed and sold as the WAVE PICT + intraoral camera.

Manual Name: *CS 1500 Intraoral Camera Safety and Regulatory Guide*

Part Number: 9H0953

Revision Number: 04

Print Date: 2017-04



Contents

- Chapter 1**
- Safety Information**
 - Conventions in This Guide 1
 - Warnings and Safety Instructions . 2
 - Camera 2
 - Computer 4
 - Hygiene and Disinfection. 5
 - General Warnings. 5
 - Cleaning the Plastic Button Ring Cover 6
 - Cleaning and Disinfecting the CS 1500 6
 - Cleaning the Camera 6
 - Disinfecting the Camera 6
 - Visually Inspecting the Camera for Damage 7
 - Disposing of the Battery 8

- Chapter 2**
- Regulatory Information**
 - Marking and Labeling Symbols . . . 9
 - Label Locations 10
 - Wireless Connection 10
 - Wired USB Connection 12
 - Indications for Use. 14
 - Regulatory Information 14
 - Electromagnetic Compatibility Precautions 14
 - Guidance and Manufacturer's Declarations 15
 - EMC Standards Information . . . 17
 - Recommended Separation Distances. 18

	EMC Standards for Intraoral	
	Camera19
	Wireless:19
	Electromagnetic Interference and	
	Electrostatic Discharge20
	Conforming with European and	
	International Standards20
	Communications Equipment22
	Accessories22
	Other Equipment22
	Cabling23
Chapter 3	Manufacturer25
Technical	Model25
Specifications	Technical Specifications25
	Minimum Computer System	
	Requirements28
Chapter 4	Manufacturer's Address29
Contact Information	Authorized Representatives29

1 Safety Information

Conventions in This Guide

The following special messages emphasize information or indicate potential risks to personnel or equipment.



WARNING: Warns you to avoid injury to yourself or others by following the safety instructions precisely.



Important: Alerts you to a condition that might cause problems.



Note: Emphasizes important information.



Tip: Provides extra information and hints.

Warnings and Safety Instructions



WARNINGS:

Camera

- You **MUST** read and understand this safety information before using the camera.
- This camera is not intended to be used with high frequency surgical equipment.
- Before using the camera, check the outer surfaces of the camera and any accessories to ensure there are no rough surfaces, sharp edges, or protrusions which may cause a safety hazard.
- The surface temperature of the LED window may rise to 40°C. Do not allow the window to come in contact with the patient's mouth for more than 10 minutes.
- You are responsible for the operation and maintenance of this camera. You **MUST** have training to use the camera.
- **DO NOT** place objects within the field of operation of the unit.
- When the unit is not in use, ensure that the camera is turned **OFF**.
- **DO NOT** use this camera in conjunction with oxygen-rich environments. This unit is not intended for use with flammable anesthetics or flammable agents.
- **DO NOT** pull or twist the cable.
- **DO NOT** drop the camera.
- **DO NOT** expose the camera to water spray or submerge it in water.

- **DO NOT** expose the camera to high vibrations.
- **DO NOT** expose the camera to ultraviolet radiation for a long period.
- Any other equipment not complying with IEC60601 shall be out of patient environment.
- **DO NOT** remove the cover of any camera components. For any repairs, contact a qualified Carestream service technician.
- **DO NOT** replace the cables provided with the camera with other cables. Doing so may damage the camera.
- **DO NOT** replace the power adapter provided with the camera with any other power adapter. Substitutes may not provide the required protection against electric shocks.
- If the equipment is faulty, turn it OFF, display an “Out of Service” notice, and contact a service technician.
- Using components, accessories, and spare parts other than those specified, with the exception of those sold by the manufacturer of the equipment, may result in a lower level of security and may be hazardous.
- Do not stare at the LED emission window.
- No modification of this equipment is allowed.
- Additional multiple outlet strips or extension cords should not be connected to the system.
- To power off the device, push the power button for 3 seconds. To isolate the device from the mains supply, unplug the USB/AV/S-Video cables and the adapter from the power outlet.

Computer

- **DO NOT** place the computer and the peripheral equipment connected to it in the immediate vicinity of the patient. Leave at least 1.83 m distance between the patient and the equipment.
- The camera is only intended to be connected to the computer or monitor which is at least IEC 60950 or equivalent standards certified. Connecting the camera to other equipment may be hazardous.
- See the installation guide for your computer for information about the data processing system, computer, and screen. Leave a sufficient amount of clear space around the computer to ensure that it is properly ventilated.
- Position the screen to avoid light reflections from internal or external lighting for maximum image quality and visual comfort.

Hygiene and Disinfection

Perform the following maintenance activities on the CS 1500 and accessories regularly.

To ensure maximum hygienic safety for the patient, carefully follow the instructions to prepare the CS 1500 camera for use.

To minimize the risk of cross-contamination, after each patient, clean and disinfect the CS 1500. See [“Cleaning and Disinfecting the CS 1500” on page 6](#).

General Warnings



WARNINGS:

- **Read and follow the warnings and personal protection instructions provided in the Safety Data Sheet (SDS) of the disinfectant before use.**
- **The disinfectant should be approved by the applicable competent authority for use on a dental medical device.**
- **You must wear gloves while handling and using the camera.**
- **Always protect the camera with a hygienic barrier sheath before use.**
- **The camera should be disinfected with a U.S. Environmental Protection Agency (EPA)-registered or CE-marked intermediate-level disinfectant solution with tuberculocidal activity between patients.**
- **DO NOT use a disinfectant containing phenolics or iodophors; doing so will damage the surface coating of the camera.**
- **Never put the camera in a sterilizing device or immerse it in water or the disinfectant solution.**
- **Excessive fluids can damage the camera.**
- **Not protected against water spray.**

Cleaning the Plastic Button Ring Cover

Use a 75% Ethanol cleaning solution to prevent cracks, chips, or other damage to the plastic button ring cover.



Caution: Do not use disinfectants containing Diisobutylphenoxyethoxyethylmethylbenzyl ammonium chloride, Isopropanol, Ethylene Glycol Monobutly Ether (2-Butoxyethanol), or similar ingredients to clean the plastic ring cover.

Cleaning and Disinfecting the CS 1500

Cleaning the Camera

If the camera is visibly contaminated with blood or body fluids, you must clean the camera before disinfecting it.

To clean the camera, follow these steps:

- 1 Dampen (**do not soak**) a lint-free cloth with lukewarm water.
- 2 Remove the blood or body fluids with the dampened lint-free cloth.

Disinfecting the Camera

After each patient, the camera must be thoroughly disinfected.

To adequately disinfect the camera, follow the disinfectant manufacturer's instructions for the appropriate contact time.



Important: If the camera is visibly soiled, it must be thoroughly cleaned prior to disinfecting. See "[Cleaning the Camera](#)."

To disinfect the camera, follow these steps:

- 1 Remove the protective sheath.
- 2 Remove all visible soil (see [“Cleaning the Camera”](#) on page 6).
- 3 Dampen (**do not soak**) a lint-free cloth with 0.525% sodium hypochlorite (1:10 dilution of household bleach), or use a commercially prepared disinfectant wipe. For example: Clorox Healthcare Bleach Germicidal Wipes, if in the USA.
- 4 Thoroughly wet the surface of the camera with the disinfectant solution. Allow the surfaces to remain wet for the time specified by the disinfectant manufacturer.



Warning: Do not rinse.

- 5 Allow to dry in the open air.

Visually Inspecting the Camera for Damage

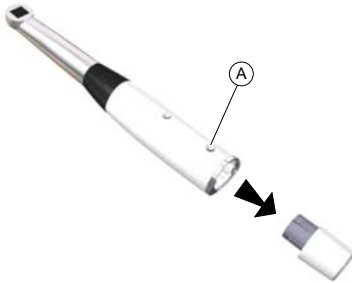
Visually inspect the camera for signs of deterioration, especially around the buttons or the cable. If damage is noted, do not use the camera and contact your representative.

Disposing of the Battery

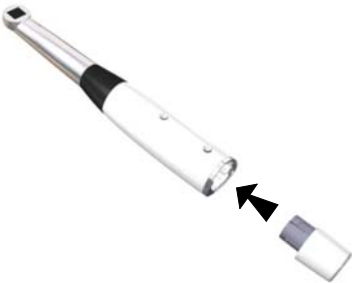
The battery is a user-replaceable part ordered directly from the distributor or dealer.

To dispose of the battery, follow these steps:

- 1 Press the Battery Release button (A) and gently pull the battery out.



- 2 Hold the camera in one hand, and use your other hand to push the new battery into the bottom of the camera.




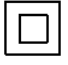








- 3 Make sure the battery is locked into place.
- 4 To make sure that the battery and all the cables are inserted correctly, press the ON/OFF for 3 seconds to power ON the camera.

When the battery has reached the end of its useful life, properly dispose of the battery following all local regulations. Your community may offer a battery collection program. Check with program sponsors for participation details.

2 Regulatory Information

Marking and Labeling Symbols

	Type BF applied part symbol classification in accordance with IEC 60601 standards.
	In the European Union, this symbol indicates: DO NOT discard this product in a trash receptacle; use an appropriate recovery and recycling facility. Contact your local sales representative for additional information on the collection and recovery programs available for this product.
	Non-ionizing radiation
	Class II equipment
	Attention: Consult accompanying documentation.
	Refer to instruction manual/booklet.
	Direct current
	Manufactured date
	Manufacturer's address
	Serial number

Label Locations

Wireless Connection

Figure 1 CS 1500 Camera Wireless Shipping Label, Battery Label

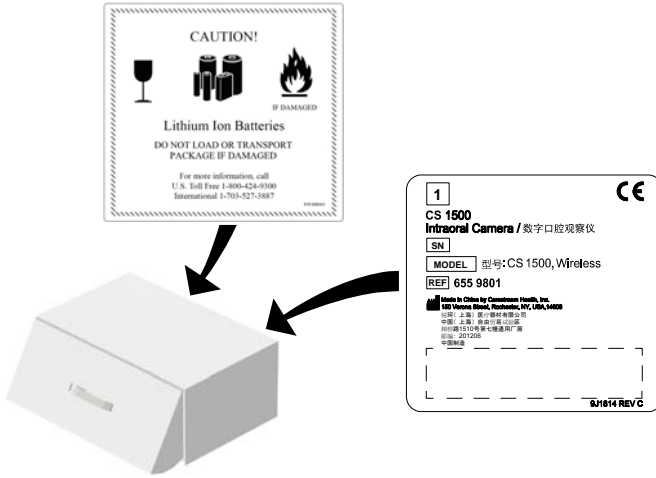


Figure 2 CS 1500 Camera Wireless Label

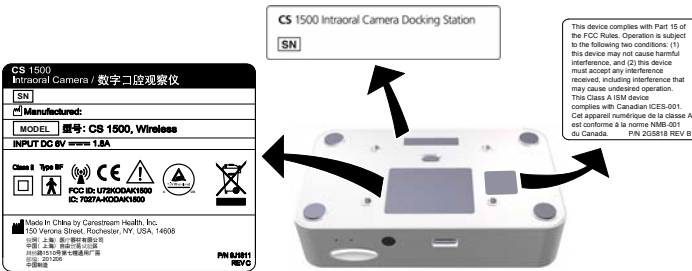


Figure 3 CS 1500 Camera Wireless Charge Station Label

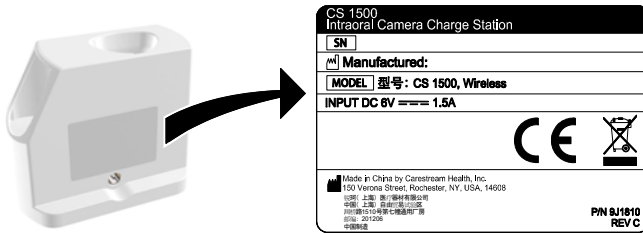


Figure 4 CS 1500 Camera Wireless FCC Canadian Statement, Handpiece Label

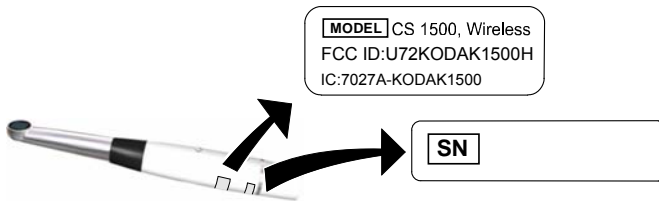
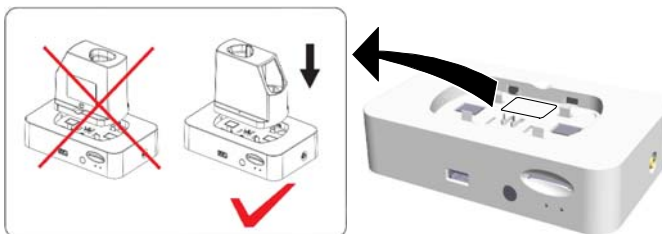


Figure 5 CS 1500 Camera Battery Label



Figure 6 CS 1500 Camera Wireless Charge Station Insert Indicative Label



Wired USB Connection

Figure 7 CS 1500 Camera Wired USB Shipping Label

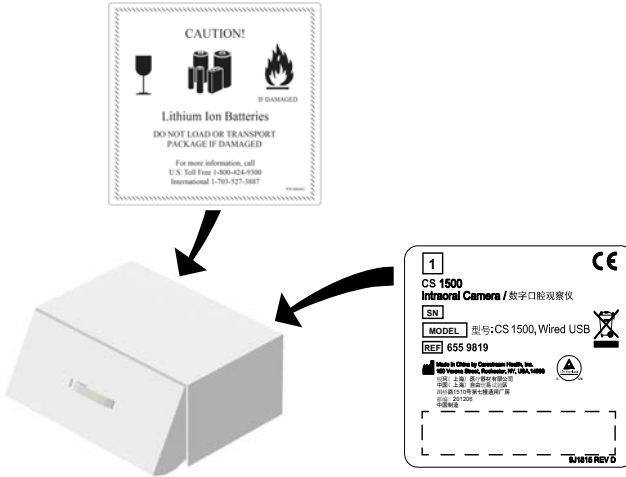


Figure 8 CS 1500 Camera Wired USB System Label

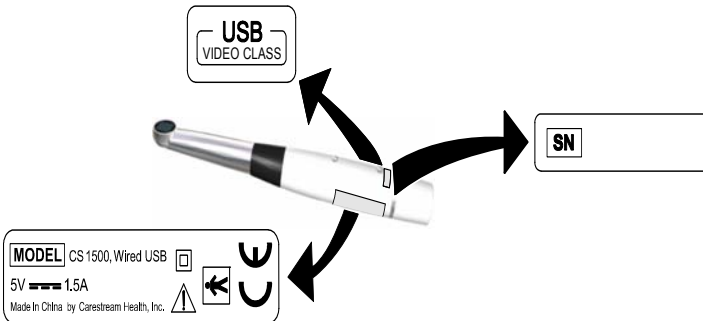
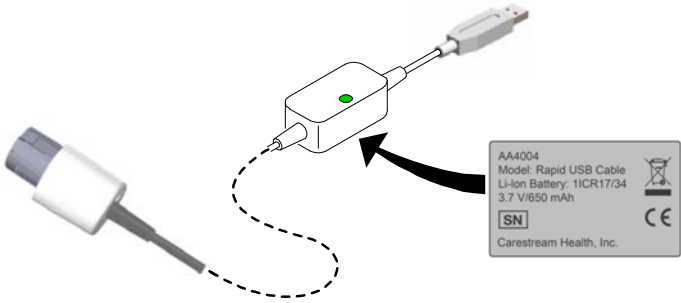


Figure 9 CS 1500 Camera Rapid USB Cable Label



Indications for Use

The CS 1500 intraoral camera is indicated for use by health professionals in viewing and capturing intraoral or extraoral color video images for the purposes of:

- Allowing practitioners to view regions of the oral cavity.
- Assisting communications with the patient by providing a view of treatment areas before and after a procedure.
- Providing images for documentation in patient records.

There are two configurations for the camera: wired USB and wireless. The wireless configuration is composed of a camera, a docking station, a charge station, and accessories. The wired USB is composed of a camera only.

Regulatory Information

The CS 1500 intraoral camera complies with the following regulations:

- 93/42/EEC European directive for medical devices including EN 60601-1-2 and collaterals
- Electrical Safety and Electromagnetic Compatibility standards (IEC) (EMC)
- Guidance and Manufacturer's Declaration - Electromagnetic Emissions

Electromagnetic Compatibility Precautions

Medical electrical equipment requires special precautions regarding electromagnetic compatibility (EMC). Medical equipment must be installed and put into service according to the EMC information provided in this documentation.

Other equipment can interfere with communications with the intraoral camera, even if the equipment complies with CISPR emissions requirements.

Portable and Mobile RF communications equipment can affect medical electrical equipment.

Guidance and Manufacturer's Declarations

Guidance and Manufacturer's Declaration - Electromagnetic Emissions

The CS 1500 intraoral camera is intended for use in the electromagnetic environment specified below. The customer or user of the intraoral camera should assure that it is used in such an environment.

Emissions Test	Compliance	Electromagnetic Environment - Guidance
RF Emissions CISPR 11	Group 1 Class B	The intraoral camera uses RF energy only for its internal function. Therefore, its RF emissions are low and are not likely to cause any interference in nearby electronic equipment.
Harmonics Emissions		
IEC 61000-3-2 Voltage Fluctuations/ Flicker Emissions	Complies	The intraoral camera is suitable for use in all establishments, including domestic establishments and those directly connected to the public low-voltage power supply network that supplies buildings used for domestic purposes.
IEC 61000-3-3		

Guidance and Manufacturer's Declaration - Electromagnetic Immunity

The CS 1500 intraoral camera is intended for use in the electromagnetic environment specified below. The customer or the user of the intraoral camera should assure that it is used in such an environment.

Immunity Test	IEC 60601 Test Level	Compliance Level	Electromagnetic Environment - Guidance
Conducted RF IEC 61000-4-6	3 V(rms) 150 kHz to 80 MHz	3 V(rms)	<p>Portable and mobile RF communications equipment should be used no closer to any part of the CS 1500 intraoral camera, including cables, than the recommended separation distance calculated from the equation applicable to the frequency of the transmitter.</p> <p>Recommended separation distance $d = 1.17 \sqrt{P}$ $d = 1.17 \sqrt{P}$ 80 MHz to 800 MHz $d = 2.33 \sqrt{P}$ 800MHz to 2.5GHz</p> <p>where P is the maximum output rating of the transmitter in watts (W) according to the transmitter manufacturer and d is the recommended separation distance in meters (m).</p> <p>Field strengths from fixed RF transmitters, as determined by an electromagnetic site survey^a, should be less than the compliance level in each frequency range^b.</p> <p>Interference may occur in the vicinity of equipment marked with the following symbol:</p>
Radiated RF IEC 61000-4-3	3 V/m 80 MHz to 2.5GHz	3 V/m	



Note 1: At 80 MHz and 800 MHz, the higher frequency range applies.

Note 2: These guidelines may not apply in all situations. Electromagnetic propagation is affected by absorption and reflection from structures, objects and people.

a Field strengths from fixed transmitters, such as base stations for radio (cellular/cordless) telephones and land mobile radios, amateur radio, AM and FM radio broadcasts, and TV broadcasts cannot be predicted theoretically with accuracy. To assess the electromagnetic environment due to fixed RF transmitters, an electromagnetic site survey should be considered. If the measured field strength in the location in which the intraoral camera system is used exceeds the applicable RF compliance level above, the intraoral camera should be observed to verify normal operation. If abnormal performance is observed, additional measures may be necessary, such as reorienting or relocating the CS 1500 intraoral camera.

b Over the frequency range 150 kHz to 80 MHz, field strengths should be less than 3 V/m.

EMC Standards Information

Electromagnetic Immunity for Equipment and Systems Fully Compliant with IEC 60601-1-2: 2007

The CS 1500 intraoral camera is intended for use in the electromagnetic environment specified below. The customer or the user of the intraoral camera should assure that it is used in such an environment.

Immunity Test	IEC 60601 Test Level	Compliance Level	Electromagnetic Environment- Guidance
Electrostatic Discharge (ESD) IEC 61000-4-2	+/- 6 kV contact +/- 8 kV air	+/- 6 kV contact +/- 8 kV air	Floors should be wood, concrete, or ceramic tile. If floors are covered with synthetic material, the relative humidity should be at least 30%.
Electrical fast transient/burst IEC 61000-4-4	+/-2kV for power supply lines	+/-2kV for power supply lines	Mains power quality should be that of a typical commercial or clinical environment.
Surge IEC 61000-4-5	+/- 1 kV line to line	+/- 1 kV line to line	Mains power quality should be that of a typical commercial or hospital environment.
Voltage dips, short interruptions and voltage variations on power supply lines IEC 61000-4-11	<5% U_T (>95% dip in U_T) for 0.5 cycle 40% U_T (60% dip in U_T) for 5 cycles 70% U_T (30% dip in U_T) for 25 cycles <5% U_T (>95% dip in U_T) for 5 sec.	<5% U_T (>95% dip in U_T) for 0.5 cycle 40% U_T (60% dip in U_T) for 5 cycles 70% U_T (30% dip in U_T) for 25 cycles <5% U_T (>95% dip in U_T) for 5 sec.	Mains power quality should be that of a typical commercial or hospital environment. If the user of the intraoral camera requires continued operation during power mains interruptions, it is recommended that the intraoral camera be powered from an uninterruptible power supply.
Power frequency (50/60Hz) magnetic field IEC 61000-4-8	3 A/m	3 A/m	Power frequency magnetic fields should be at levels characteristic of a typical location in a typical commercial or hospital environment.

Note: U_T is the a.c. main voltages prior to application of the test level.

Recommended Separation Distances

Recommended Separation Distance Between Portable and Mobile RF Communications Equipment and the Intraoral Camera System

The CS 1500 intraoral camera is intended for use in an electromagnetic environment in which radiated RF disturbances are controlled. The customer or the user of the intraoral camera can help prevent electromagnetic interference by maintaining a minimum distance between portable and mobile RF communication equipment (transmitters) and the CS 1500 intraoral camera as recommended below, according to the maximum output of the communications equipment.

Rated Maximum Output Power of Transmitter Watts	Separation Distance According to Frequency of Transmitter Meters		
	150 kHz to 80 MHz	80 MHz to 800 MHz	800 MHz to 2.5 GHz
	$d = 1.17 \sqrt{P}$	$d = 1.17 \sqrt{P}$	$d = 2.33 \sqrt{P}$
0.01	0.117	0.117	0.233
0.1	0.37	0.37	0.737
1	1.17	1.17	2.33
10	3.7	3.7	7.36
100	11.7	11.7	23.3

For transmitters rated at a maximum output power not listed above, the recommended separation distance in meters (m) can be estimated using the equation applicable to the frequency of the transmitter, where P is the maximum output power rating of the transmitter in watts (W) according to the transmitter manufacturer.

Note 1: At 80 MHz and 800 MHz, the separation distance for the higher frequency range applies.

Note 2: These guidelines may not apply in all situations. Electromagnetic propagation is affected by absorption and reflection from structures, objects, and people.

EMC Standards for Intraoral Camera

IEC 60601-1-2: 2007 EMC requirements and tests, Medical Electrical Equipment including CISPR11:2009 +A1: 2010.

NOTE: This equipment has been tested and found to comply with the limits for a Class A digital device, pursuant to Part 15 of the FCC Rules. These limits are designed to provide reasonable protection against harmful interference when the equipment is operated in a commercial environment. This equipment generates, uses, and can radiate radio frequency energy and, if not installed and used in accordance with the instruction manual, may cause harmful interference to radio communications. Operation of this equipment in a residential area is likely to cause harmful interference in which case the user will be required to correct the interference at his own expense.

Install the docking station in such a manner as to maintain a minimum of 20 cm (7.9 inches) separation distance between the radiating element(s) and all persons. This safety warning conforms to FCC radio frequency exposure limits.

This device complies with Part 15 of the FCC Rules. Operation is subject to the following two conditions: (1) this device may not cause harmful interference, and (2) this device must accept any interference received, including interference that may cause undesired operation.

Wireless:

USA and Canada:

FCC Part 15:2008

RSS-210 (Issue 7):2007

RSS-Gen (Issue 2):2007

RSS-102 (Issue 3):2007

Europe:

EN 300 328 V1.7.1:2008

EN 50371:2002

Electromagnetic Interference and Electrostatic Discharge

According to CISPR11:2009+A1:2010 Group 1, Class B.

This Class A ISM device complies with Canadian ICES-001.

This device has been designed to operate with the antenna listed below, and having a maximum gain of 1.6 dB. Antennas not included in this list or having a gain greater than 1.6 dB are strictly prohibited for use with this device. The required antenna impedance is 50 ohms.

Detachable antenna:

Trade Name: Exceltek

Model Name: C0248-ANG00001

Conforming with European and International Standards

EN 60601-1 / IEC 60601-1: Medical Electrical Equipment, Part 1: General Requirements for Basic Safety and Essential Performance

EN 60601-1-2 / IEC 60601-1-2: Medical Electrical Equipment, Part 1-2: General requirements for basic safety and essential performance – Collateral Standard: Electromagnetic Compatibility

IEC 60601-2-18: Medical Electrical Equipment, Part 2-18: Particular requirements for the basic safety and essential performance of endoscopic equipment

EN 62471 / IEC 62471: Photobiological safety of lamps and lamp systems: Equipment classification, requirements, and User's Guide

EN 60601-1-6 / IEC 60601-1-6: Medical Electrical Equipment, Part 1-6: General requirements for basic safety and essential performance - Collateral Standard: Usability

EN 62366 / IEC 62366: Medical devices - Application of usability engineering to medical devices

EN 62304/IEC 62304: Medical device software - Software life cycle Processes

EN ISO 10993-1: Biological evaluation of medical devices - Part 1: Evaluation and testing within a risk management process

EN ISO 14971: Medical devices - Application of risk management to medical devices

EN 980: Symbols for use in the labeling of medical devices

EN 1041: Information supplied by the manufacturer of medical devices

CAN/CSA-C22.2 No. 60601-1: Medical Electrical Equipment - Part 1: General requirements for basic safety and essential performance

ANSI/AAMI ES60601-1: Medical Electrical Equipment - Part 1: General requirements for basic safety and essential performance

CAN/CSA-C22.2 No. 60601-1: Medical Electrical Equipment, Part 2-18: Particular requirements for the basic safety and essential performance of endoscopic equipment

Condition	Classification
Type of protection against electric shock	Class II equipment
Degree of protection against electric shock	Type BF Applied Part
Degree of protection against ingress of water	<ul style="list-style-type: none"> • IPX0 Note: When it is covered by the protective sheath, the camera head is IPX1.
Flammable anesthetics	Not suitable for use in the presence of flammable anesthetics or a mixture of flammable anesthetics with air or oxygen or nitrous oxide.
Mode of operation	Continuous operation

Communications Equipment

The wireless version of the CS 1500 intraoral camera operates with a 802.11g protocol in a 2.4GHz frequency band. The radio output power is 20 mW (nominal).

Accessories

The use of cables, or accessories other than those specified with the exception of those sold by the manufacturer of the equipment as replacement parts for internal components, may result in increased emissions or decreased immunity of the medical equipment.

Other Equipment

The CS 1500 intraoral camera should not be used adjacent to or stacked with other equipment. If adjacent or stacked use is necessary, the CS 1500 intraoral camera should be observed to verify normal operation in the configuration in which it will be used.

Cabling

Interface	Max. Cable Length	Shielded/ Unshielded	Number of interfaces with identical electrical characteristics	Cable Classifications
AC Docking Station - Camera	2.5 m	Unshielded	1	AC - DC Adapter
Docking Station - Camera	2.5 m	Shielded	1	Signal, DC Power (USB)
Docking Station - Charge Station	2.5 m	Unshielded	1	DC Power
Docking Station - Computer	1.5 m	Shielded	1	Signal
Docking Station - Monitor (AV)	1.5 m	Shielded	1	Signal
Docking Station - Monitor (S-Video)	1.5 m	Shielded	1	Signal

3 Technical Specifications

Manufacturer

Carestream Health, Inc.
150 Verona Street
Rochester, New York - USA 14608

Model

- CS 1500, Wired USB
- CS 1500, Wireless

Technical Specifications

Components	Technical Specifications
Camera	
Output	<ul style="list-style-type: none">• 1 S-video output• 1 PAL output• 1 NTSC output• 1 VGA video output• 1 digital USB 2.0 output• 1 SD card socket• 1 DC power output
Sensor technology	1/2.5 inch CMOS
Resolution	1024 x 768 pixels
Lighting	Super white LEDs / Class 1 LED according to IEC 60825-1

Components	Technical Specifications
FOV	80°
View angle	90°
Connecting cable length	2.5 m
Video signal	<ul style="list-style-type: none"> • S-Video • TV (PAL, NTSC) • VGA
Digital connection	<ul style="list-style-type: none"> • USB 2.0 high speed • WiFi 802.11 g
White balance	Automatic
Output impedance	75 ohm
Adapter	100-240V~, 50/60Hz, 600mA output: DC 6V/2.5A
Adapter	AC adapter complies with IEC 60601-1
Output of adapter	DC 6V, 2.5A
Battery	650mAh; ICR17/34 Li16340C manufactured by SHENZHEN BOFUNENG BATTERY CO., LTD
Rapid USB Cable	
Battery capacity	650mAh
Charging current	75mA
Recommended first charging time	10 hours
Normal charging time	Less than 2 hours
<p>Note: The battery embedded in the Rapid USB Cable complies with IEC/EN 62133 standard. For the battery disposal instructions, see "Disposing of the Battery" on page 1–8.</p>	
Dimensions	
Camera	191 x 31 x 25 mm
Docking station	149 x 93 x 32 mm
Charge station	92 x 58 x 73 mm
Weight	
Camera without cable/battery	61 g
Camera with battery	91 g
Docking station	225 g

Components	Technical Specifications
Charge station	180 g
Environment	
Operating temperature	+5 ~ +30 °C
Transportation and storage temperature	-10—60 °C
Operating relative humidity	10 ~ 85% RH
Transportation and storage relative humidity	10 ~ 95% RH
Operating atmospheric pressure	700-1060 hPa
Transportation and storage atmospheric pressure	600-1060 hPa

Minimum Computer System Requirements

If necessary, you must update your computer system configuration.

Item	Minimum System Requirement
CPU	1.8 GHz Intel Pentium IV
RAM	2 GB
Monitor	1024 x 768 minimum screen resolution - 32 bits color mode
Operating system	<ul style="list-style-type: none">• Windows 8 or 8.1 (32 or 64 bits)• Windows 7 (32 or 64 bits)• Windows 10 (64 bits)
USB port	USB 2.0 high speed port
CD/DVD drive	DVD-ROM drive is required to install the product.
Video memory	128M (integrated or dedicated)
Video card driver	Support OpenGL version 1.4 or higher

The computer should be situated in or close to the operating area, in the visual field of the practitioner when using the camera.



Note: The quality of images is affected by the quality of the monitor and monitor settings. See your monitor user's guide for information.

4 Contact Information

Manufacturer's Address



Carestream Health, Inc.
150 Verona Street
Rochester, NY USA 14608

Authorized Representatives

Authorized Representative in the European Community

EC	REP
----	-----

Carestream Health France
1, rue Galilée
93192 Noisy-Le-Grand Cedex, France

Importer for European Union

Carestream Health Netherlands B.V.
Bramenberg 12
3755 BZ Eemnes
The Netherlands

Representante no Brasil Carestream do Brasil Comércio e Serviços de Produtos Médicos Ltda.

Rua Pequetita, 215 cjs.
31 E 32 Edifício Atrium VII - Vila Olímpia
São Paulo - Brazil
CEP (Zip code): 04552-060

Carestream Dental

A Division of Carestream Health, Inc.
150 Verona St.
Rochester, NY 14608
USA

For more information, visit: www.carestreamdental.com

To give documentation feedback, visit:

www.carestreamdental.com/documentationfeedback